

HYUNDAI HDB SERIES BREAKERS





HDB SERIES

The Best Selection for Your Job!

- ✓ Powerful Performance
- ✓ Advanced Technology
- ✓ Exceptional Durability



Features for HDB Series Breakers

Choose from 14 different models engineered to fit a wide range of machine sizes and applications. All of them deliver innovative technology and unmatched durability and productivity.









- Larger diameter tie-bolt for high performance and optimum durability
- Inlet/outlet port connecting hoses upgraded from split flange type to new adapter type that helps prevent bolt breakage and oil leakage
- Smart design, including changes to the box housing for extra durability
- Large chisel diameter for increased strength and durability

Options:

- Anti-blank firing on/off valve
- TPC system (2-stage stroke valve)
- Provision hold for underwater work
- Auto grease system

TOOL & OPTION

Shape of Chisel

Classification	Major Contents		
Moil			Concrete, Rocks, Pavement, Slopes
Wedge			Trench, Slopes, Finishing
Blunt			Quarries
Conical			Concrete, Rocks, Pavements

Choosing the Chisel for Different Rock Types

Classification	Rock	Recommended Breakers	Recommended Chisels
Hard Rock	Basanite, Granite Diabase	HDB140 to HDB800	Blunt type, Wedge type
Soft Rock	Sandstone, Limestone Coal	HDB10 to HDB800	Moil type, Wedge type, conical type

Auto Grease Bracket-Mounted System Advantages

Auto Grease Bracket Mounted System

- Automatically greases several times a day
- Eliminates the need for manual greasing
- Contributes to longer tool life, especially for chisels
- No need for extra drive power

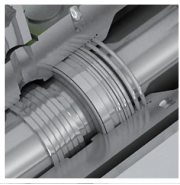
Available for breaker models HDB140 to HDB800



*Photo may include optional equipment.

TECHNOLOGY

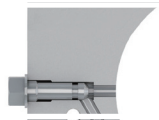
Seal System



By using only NOK seals on the HDB series, we have achieved longer seal life.

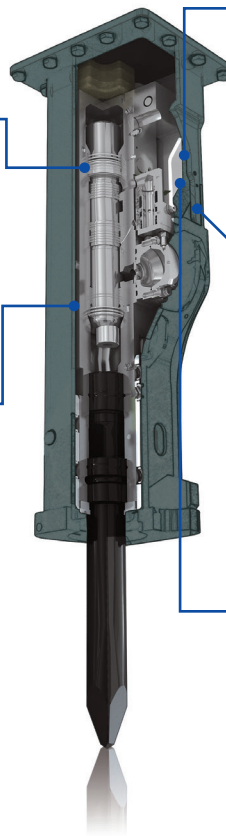
- On models HDB210 and up, an additional square buffer seal increases the durability of the gas seals, step seals, and the piston.
- This buffer seal also helps to minimize piston vibration inside the housing.

ABF (Anti-Blank Firing) System with Auto-Control Valve



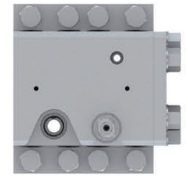
ABF (anti-blank firing), which is standard for Models HDB50 to HDB800, helps protect chisel points, bolts and front heads from blank firing, regardless of the application.

When the auto-control valve is on, the breaker operation automatically starts once there is a small amount of pressure under the chisel and automatically stops when the chisel is lifted after breaking or there is no material below the chisel. On Models HDB650 to HDB800, turning off the auto-control valve is not an option.



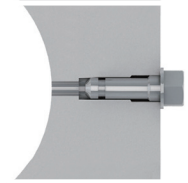
Valve Case with TPC (Total Power Control) System

- Shortened height of the valve case while increasing the width for added balance.
- Increased the durability of the valve plate by using 6 bolts instead of 4.



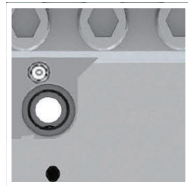
2 Stroke Selector System

The 2-stroke selector allows users to change from long stroke to short stroke according to the performance needs for their application. On Models HDB210-HDB450, the selector is located on valve case. On Models HDB50 to HDB180 it is located on the side of the cylinder.



Energy Regeneration Valve

After the piston strikes the chisel and the piston retracts into the cylinder, up to 15% of the flow energy is harnessed to be reapplied on the next stroke down. (HDB650, HDB800)

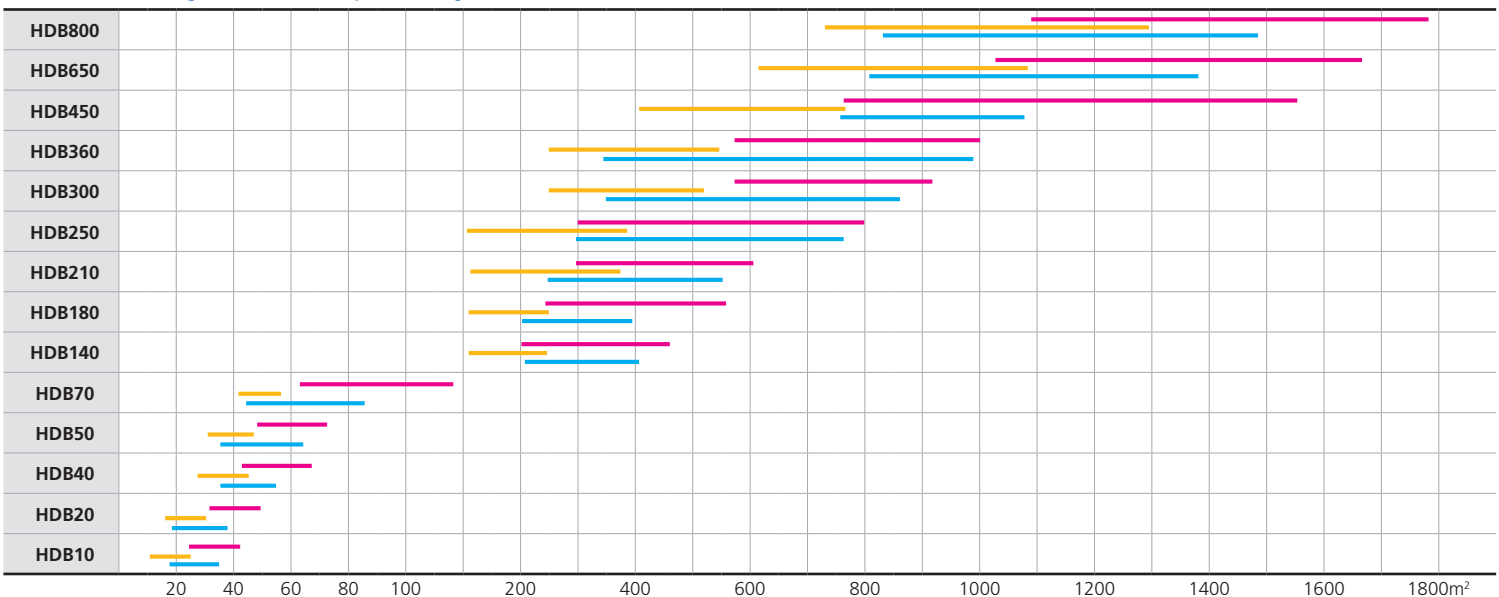


HDB Applications

Contents	HDB10	HDB20	HDB40	HDB50	HDB70	HDB90	HDB140	HDB180	HDB210	HDB250	HDB300	HDB360	HDB450	HDB650	HDB800
Underwater works	-	-	●	●	●	●	●	●	●	●	●	●	●	●	●
Auto Greasing System Hole	-	-	-	-	●	●	●	●	●	●	●	●	●	●	●
TPC(Total Power Control) System Selector Type	-	-	-	●	●	●	●	●	●	●	●	●	●	●	●
ABF(Anti Blank Firing) System	-	-	-	●	●	●	●	●	●	●	●	●	●	●	●
Auto Greasing Unit	-	-	-	-	●	●	●	●	●	●	●	●	●	●	●
Central Grease Supply Unit	-	-	-	-	●	●	●	●	●	●	●	●	●	●	●
BPM Adjuster	-	-	-	-	-	-	-	-	●	●	●	●	●	●	●
Internal Relief Valve	-	-	-	-	-	-	-	-	●	●	●	●	●	-	-
TPC(Total Power Control) System Remote Control Type	-	-	-	-	-	-	-	-	●	●	●	●	●	●	-
Low Noise Housing Bracket	●	●	●	●	●	●	●	●	●	●	●	●	●	●	●

Standard : ●, Option : ●

Productivity (8 hours per day)



• Productivity can be changed depending on operator's skill, using machine and job site condition. The above data is reference purpose only.

— Hard Sand Stone
— Reinforced Concrete
— Non-Reinforced Concrete

SPECIFICATIONS

HDB Series Breaker Specifications

Item	Unit	HDB10	HDB20	HDB40	HDB50	HDB70	HDB90	HDB140	HDB180	HDB210	HDB250	HDB300	HDB360	HDB450	HDB650	HDB800
Operating Weight (Top Box BKT.)	kg	115	150	224	333	431	614	929	1209	1738	2165	2832	2937	3713	4380	5625
	lb	253	330	493	734	950	1354	2048	2665	3832	4773	6243	6475	8186	9656	12401
Overall Length (w/STD. MTG. BKT)	mm	1110	1239	1408	1603	1805	1981	2225	2455	2764	2898	3200	3200	3595	3766	4059
	Inch	43.7	48.8	55.4	63.1	71.1	78	87.6	96.7	108.8	114.1	126	126	141.5	148.3	159.8
Overall Length (w.o/MTG. BKT)	mm	973	1090	1258	1419	1591	1760	1962	2153	2395	2526	2790	2790	3173	3271	3505
	Inch	38.3	42.9	49.5	55.9	62.6	69.3	77.2	84.8	94.3	99.4	109.8	109.8	124.9	128.8	138
Operating Weight (Side BKT.)	kg	-	-	162	271	380	513	773	1199	1647	2020	2796	2806	3628	-	-
	lb	-	-	357	597	750	1131	1704	2643	3631	4453	6164	6186	7998	-	-
Overall Length (Side BKT.)	mm	-	-	1192	1560	1657	1842	1903	2094	2348	2457	2732	2732	3070	-	-
	Inch	-	-	46.9	61.4	65.2	72.5	74.9	82.4	92.4	96.7	107.6	107.6	120.9	-	-
Chisel Out Dia.	mm	40	45	62	70	78	85	105	120	135	145	150	155	165	180	200
	Inch	1.6	1.8	2.4	2.8	3.1	3.3	4.1	4.7	5.3	5.7	5.9	6.1	6.5	7.1	7.9
Chisel Length	mm	420	500	610	730	806	850	975	1165	1250	1280	1400	1400	1650	1500	1700
	Inch	16.5	19.7	24	28.7	31.7	33.5	38.4	45.9	49.2	50.4	55.1	55.1	65	59.1	66.9
Setting Pressure	kgf/cm ²	150	150	150	170	180	190	190	210	210	210	210	210	210	240	240
	psi	2134	2134	2134	2418	2560	2702	2702	2987	2987	2987	2987	2987	2987	3414	3414
Impact Power	Ft.Lbs	140	220	600	800	1000	1500	2000	3000	4000	6530	8550	8550	11000	12100	16200
	J	190	300	820	1090	1370	2050	2730	4100	5450	8850	11600	11600	15000	16500	22000
Working Pressure	kgf/cm ²	70~110	80~120	100~140	100~140	100~140	100~140	120~160	120~170	130~170	140~180	140~180	140~180	140~180	150~190	150~190
	psi	996~1565	1138~1707	1422~1991	1422~1991	1422~1991	1422~1991	1707~2276	1707~2418	1849~2418	1991~2560	1991~2560	1991~2560	1991~2560	2134~2702	2134~2702
Oil Flow	lpm	15~30	20~40	30~50	30~55	45~80	50~100	90~110	100~140	110~160	150~210	180~250	180~250	200~280	280~400	320~450
	gpm	4.0~7.9	5.3~10.5	7.9~13.2	7.9~14.5	11.9~21.1	13.2~26.4	24~29	26.4~37	29.1~42.3	39.6~55.5	47.6~66.0	47.6~66.0	52.8~74.0	74.0~105.7	322~119.9
Blow Rate (H/ Speed)	BPM	600~1200	600~1200	500~1000	350~900 (450~1000)	350~850 (450~1100)	300~700 (550~950)	350~550 (500~750)	350~550 (450~600)	350~500 (450~600)	250~350 (300~450)	200~350 (300~480)	200~350 (300~480)	200~300 (300~450)	250~420 (300~500)	230~370 (300~480)
		Back Head N2 Gas Pressure	kgf/cm ²	12	12	12	12	12	12	12	11	11	11	11	11	16
Suitable Excavator	ton	0.5~1.5	0.8~3	3~5	4~6	6~8	7~12	10~15	16~20	18~25	22~29	26~32	28~40	38~50	42~81	55~100
	lb	1102~3307	2205~5512	6614~9921	6612~17637	11020~17637	13228~19842	22046~33069	35274~44092	39683~55116	48502~63934	57320~70548	61729~79366	88185~110231	92594~178574	121254~220462

Suitable Excavator

Item	HDB10	HDB20	HDB40	HDB50	HDB70	HDB90	HDB140	HDB180	HDB210	HDB250	HDB300 / HDB360	HDB450	HDB650	HDB800
Model	R16-9, R17Z-9A	R27Z-9, R25Z-9A, R35Z-9A	R35Z-9, R35Z-9A	R55-9, R55-9A, R55W-9, R55W-9A, R60CR-9, R60CR-9A	R60CR-9A	R80-7, R80CR-9, R80CR-9A	R140LC-9, R140W-9, R140W-9A, R145LCR-9, R145LCR-9A, R140W-7, HX140L	R160LC-9, R160LC-9A, R170W-9, R180LC-9, R180LC-9A, HW180, R180W-9A, R170W-7, HX180L	R210LC-9, R210W-9, R220LC-9A, R235LCR-9, R235LCR-9A, HX220, HX235LCR	R250LC-9, R260LC-9A, HX260L	R290LC-9, R300LC-9A, R320LC-9, R330LC-9A, R380LC-9, HX300L, R380LC-9A,	R480LC-9, R480LC-9A, HX480L	R520LC-9, R520LC-9A, HX520L	R800LC-9, R800LC-9A

PLEASE CONTACT



6100 Atlantic Blvd Norcross, GA 30071
 TEL (1) 678-823-7777 / FAX (1) 678-823-7778
 www.hceamericas.com